



Dawn Leigh Climie

e-mail:
info@dontshootthecostumer.com

COSTUME SET SUPERVISOR

FEATURES		
	<u>REDEMPTION</u> Set Supervisor (Designer, Chris Hargadon)	2013
	<u>WORD AND PICTURES</u> Set Supervisor (Designer, Tish Monaghan)	2013
	<u>HORNS</u> Set Supervisor (Designer, Carol Beadle)	2012
	<u>HALO 4: FOWARD UNTO DAWN</u> Set Supervisor (Designer, Cynthia Summers)	2012
	<u>THE BOURNE LEGACY</u> Set Supervisor/Personal <i>Canada & Manila</i> (Designer, Shay Cunliffe)	2011/12
	<u>RECOIL</u> Set Supervisor (Designer, Zohra Shahalimi)	2011
	<u>MISSION IMPOSSIBLE 4</u> Key Costumer/Personal <i>Prague & Dubai</i> (Designer, Michael Kaplan) Costume Supervisor - Jim Tyson, Key Costumer – Dawn Line	2010/11
	<u>THE THING</u> Set Supervisor (BC Glacier Unit) (Designer, Luis Sequeira)	2010
	<u>A TEAM</u> Set Supervisor (Designer, Betsy Heimann)	2009
	<u>TRON 2.0</u> Key Set Supervisor (Designer, Christine Bieselin Clark: Michael Wilkenson) Costume Supervisor – Tangi Crawford	2009
	<u>2012</u> Set Supervisor <i>Vancouver, Los Angeles</i> (Designer, Shay Cunliffe) Costume Supervisors– Jim Tyson, Dawn Line	2008
	<u>FENCEWALKER</u> On Set Key Costumer , <i>Los Angeles</i> (Designer, Lisa Tomczeszyn)	2008
	<u>X FILES: I WANT TO BELIEVE</u> Set Supervisor (Designer, Lisa Tomczeszyn)	2007
	<u>SHOOTER</u> Set Supervisor , <i>Vancouver, Philadelphia</i> (Coordinator, Janice DeVries)	2006
	<u>SHATTERED</u> Set Supervisor , <i>Vancouver, Chicago</i> (Designer, John Bloomfield)	2006
	<u>SCARY MOVIE 4.5</u> Costumer/2nd Unit Supervisor (Designer, Carol Ramsey)	2006
	<u>MIAMI VICE</u> On Set Key Costumer , <i>Miami, Paraguay, Dominican Republic</i> (Designer, Janty Yates, Michael Kaplan) Costume Supervisor – Jim Tyson, Key Costumer – Dawn Line	2005
	<u>JOHN TUCKER MUST DIE</u> Set Supervisor (Designer, Alexandra Welker)	2005
	<u>THE FOG</u> Set Supervisor (Designer, Monique Prudhomme)	2005
	<u>FANTASTIC FOUR</u> (greenscreen/splinter/cyberscan) Costumer (Designer, Jose Fernandez)	2005
	<u>ONCE UPON A MATTRESS</u> Set Supervisor (Designer, Chris Hargadon)	2004
	<u>BLADE 3</u> Set Supervisor 2nd unit (Designer, L.J. Shannon)	2003
	<u>THE CHRONICLES OF RIDDICK</u> Set Supervisor (Designer, Ellen Mirojnick) Costume Supervisors– Jim Tyson, Dawn Line	2003
	<u>REPLICANT</u> Set Supervisor (Designer, Terri Bardon)	2000
	<u>DUDLEY DO RIGHT</u> Costume Construction/Leather (Designer, Lisa Jenson)	1998
	<u>THE THIRTEENTH WARRIOR</u> Set Supervisor 2nd unit (Designer, Kate Harrington)	1997
	<u>SONG SPINNER</u> Costume Coordinator (Designer, Wendy Partridge)	1995
	<u>HOW THE WEST WAS FUN</u> Truck Supervisor (Designer, Wendy Partridge)	1994
	<u>TWO BROTHERS, A GIRL AND A GUN</u> Set Supervisor (Designer, Jill Concannon)	1992

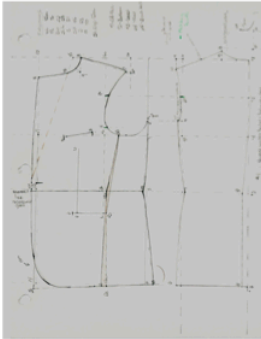
PILOTS	<u>ONCE UPON A TIME</u> Set Supervisor (Designer, Eduardo Castro)	2011
	<u>ALCATRAZ</u> Back Ground Costumer (Designer, Maya Mani)	2011
	<u>WILDE KINGDOM</u> Set Supervisor (Designer, Karen Patch)	2010
	<u>SAMURAI GIRL</u> Set Supervisor (Designer, Kerry Weinrauch)	2007
	<u>Just a Phase</u> Set Supervisor (Designer, Diane Widas)	2004
	<u>The L Word</u> Set Supervisor (Designer, Sheila White)	2002
MINI SERIES	<u>WORLD ON FIRE</u> Set Supervisor (Designer, Aieisha Li)	2012
	<u>AFTERSHOCK</u> Set Supervisor (Designer, Tish Monaghan)	1999
	<u>ATOMIC TRAIN</u> Set Supervisor 2nd unit (Designer, Glenne Campbell)	1998
	<u>IN COLD BLOOD</u> Costume Coordinator (Designer, Wendy Partridge)	1996
	<u>CHILDREN OF THE DUST</u> Truck Supervisor (Designer, Wendy Partridge)	1994
	<u>BLACK FOX</u> Trilogy Truck Supervisor (Designer, Wendy Partridge)	1993
MOVIES	<u>TRAFFICKERS</u> Set supervisor (Designer, Cynthia Summers)	2013
	<u>SAINT SINNER</u> Set Supervisor (Designer, Terri Bardon)	2002
	<u>BREEDERS</u> Set Supervisor (Designer, Jori Woodman)	2001
	<u>HIDDEN TARGETS</u> Set Supervisor (Designer, Jori Woodman)	2001
	<u>CLASS WARFARE</u> Set Supervisor (Designer, Katia Stanio)	2000
	<u>THE ALADDIN WINDOW</u> Set Supervisor (Designer, Terri Bardon)	2000
	<u>HEART FULL OF RAIN</u> Truck Supervisor (Designer, Wendy Partridge)	1996
	<u>CONVICT COWBOY</u> Truck Supervisor (Designer, Wendy Partridge)	1994
	<u>ORDEAL IN THE ARCTIC</u> Truck Supervisor (Designer, Wendy Partridge)	1992
SERIES	<u>ONCE UPON A TIME</u> Set Supervisor (Designer, Eduardo Castro)	2011
	<u>KYLE XY</u> Set Supervisor (Designer, Kerry Weinrauch)	2007
	<u>EXES & OH'S</u> Set Supervisor (Designer, Kerry Weinrauch)	2006
	<u>ROMEO 2</u> Set Supervisor (Designer, Rob Jeszik)	2004
	<u>JEREMIAH 2</u> Set Supervisor (Designer, Rob Jeszik)	2003
	<u>JEREMIAH</u> Set Supervisor (Designer, Sheila White)	2002
	<u>BEYOND BELIEF</u> Set Supervisor (Designer, Sheila White)	2001
	<u>SECRET AGENT MAN</u> Set Supervisor (Designer, Maya Mani)	2000
	<u>DAVINCI'S INQUEST</u> Set Supervisor (Designer, Glenne Campbell)	1998
	<u>LONESOME DOVE: "The Outlaw Years"</u> Costume Coordinator (Designer, Wendy Partridge)	1995
	<u>DESTINY RIDGE</u> Truck Supervisor (Designer, Wendy Partridge)	1993
	<u>HOLLYWOOD BABYLON</u> Seamstress/Trainee Costumer (Jill Concannon)	1992

Education & Related Experience

Education

Banff Theater of Fine Arts - Period Costuming & Historical Studies

- * materials and construction of period apparel
- * corset construction



Northern Alberta Institute of Technology - Apparel and Design

- * men's and ladies tailoring, children's clothing
- * pattern drafting

Teaching Experience

Introductory Film Blood Course – Secrets of Blood for Film and Television

- * Capilano University, IATSE 891, SMPA Regina



Special Skills

- * construction of contemporary, period and fantasy clothing, including; leather and specialty fabrics, chain mail and full warrior regalia, corsets and period gowns, first nations/aboriginal costuming.



- * creating and maintaining breakdown from basic wear and tear through intensifying levels of aging and/or ruination.

- * rigging, ascertaining and integrating departmental needs for visual effects, special effects and stunts including; burns, blood effects, explosions, bullet hits, motion control, CGI image capture and hanging/flying harnesses.

- * sound wiring with difficult fabrics and for cast comfort.
- * organizing and supervising large, demanding sets and set crews.
- * positive and effective liaison to other departments.
- * positive and productive communicator with actors, including extensive experience with children.



Theatre Credits

Jubilee Auditorium, Calgary
SHOW BOAT

Personal Dresser

1997 Calgary run

Stage West, Calgary

Seamstress/Dresser

1997 Spring

Banff Theatre of Fine Arts – 1992 Spring & Summer

UBU ROI - opera

Seamstress/Dresser

LA TRAGADIE DE CARMEN - opera

Seamstress

SEQUOIA - ballet

Seamstress/Dresser

TWELFTH NIGHT - drama

Seamstress



Citadel Theatre, Edmonton – 1991 Winter Season

ROBIN HOOD

Seamstress

LEND ME A TENOR

Seamstress

HEAD TO TETE

Seamstress

ROMEO AND JULIET

Dresser

**Stage Polaris Alchemical Dramatic Society,
Musical Theatre, Edmonton**

First Hand

1990 - 1994 Seasons

All productions including;
SNOW QUEEN, ADVENTURES OF HUCK FIN,
RUMPELSTILTSKIN, SNOW WHITE AND THE
SEVEN DWARVES, WONDERFUL WORLD OF OZ,
BEAUTY AND THE BEAST, A CHRISTMAS CAROL,
SECRET GARDEN, AFRICAN STORY, NARNIA, and
THE LION, THE WITCH AND THE WARDROBE.



Mayfield Dinner Theatre, Edmonton

Seamstress

1991 Fall

Fort Edmonton Historical Theme Park, Edmonton Alberta

Circa 1720, 1845, 1912, and 1924

Reproduction Costumer

1991 – 1992 Seasons